

FULL
BODY



SAND
STONE
FULL BODY TILES

BY



OUR BRA ND STO RY

We welcome you all to the world of Sparrow Group, where the ingenuity of sharp vision and strong network is the backbone. Our strength lies in the vision to produce quality tiles with in-depth technical input and constant vigilance on the market trends and demands. This with the consistent quality checks has resulted in a healthy track record of our company. The production line of the company is in tune with the best in the world market and product falls in the line with high standard of E.No. - 1778 11A and Indian Standard IS 13755. Organization R & D of the company has produced and maintained strong quality and design landmarks and we can proudly say our company deserves ISO 9001 : 2000 company. A well established dealers network throughout the company and the global presence into markets of U.A.E., South Africa, Sri Lanka, etc. is continually growing. You will love these Wall, Floor and Vitrified tiles because they give your house a decor that is tasteful, classy and, above all, is the style that you choose. A full range, in which you are sure to find the option you prefer from the finest, shiniest materials for creating a deluxe atmosphere, to tiles that capture the authentic and traditional for a rustic feel. The wall & floor collections, the strongest tile, where technology has been used to create natural effect, or to invent innovative, off-beat pieces for more contemporary tastes.



ST RE NG TH

Beautiful full body vitrified tiles from our collection are ideal for use in public and commercial buildings that see a lot of foot traffic.



SUPERIOR

These full body vitrified tiles are very resistant to scratching and cracking and have a consistent colour throughout.



SAND STONE

FULL BODY TILES

600x600mm

We are committed to designing and manufacturing finest tiles . Continue to meet consumer needs while offering sustainable solutions .



RESIDENTIAL



HOTELS



RESTAURANT



PUBLIC SPACES



GARDEN & POOL



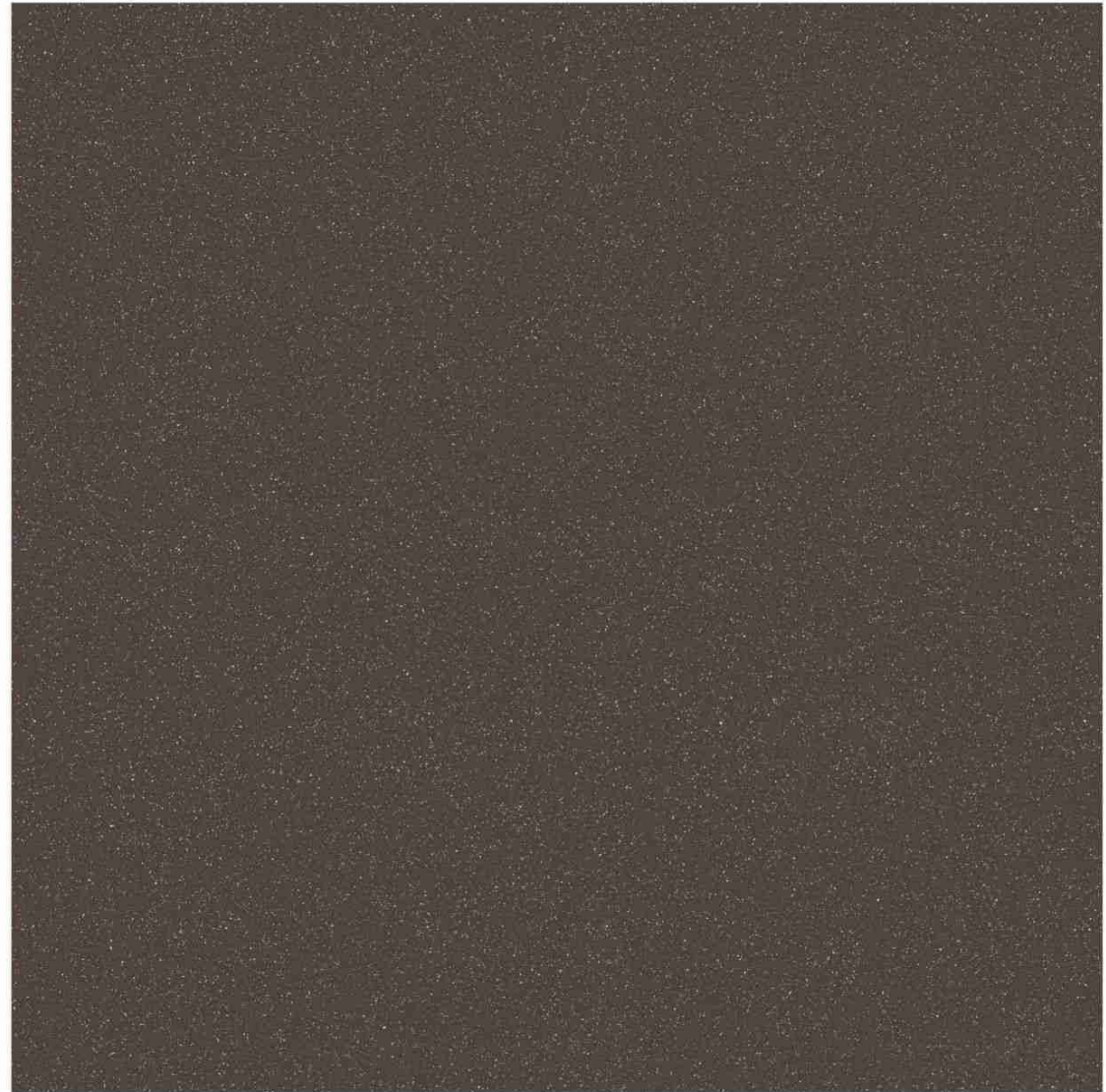
OFFICE & SHOPS

SAND STONE

FULL BODY TILES

600x600mm

FINISH.
GLOSSY/MATT



PETRA CADBURY





RESIDENTIAL



HOTELS



RESTAURANT



PUBLIC SPACES



GARDEN & POOL



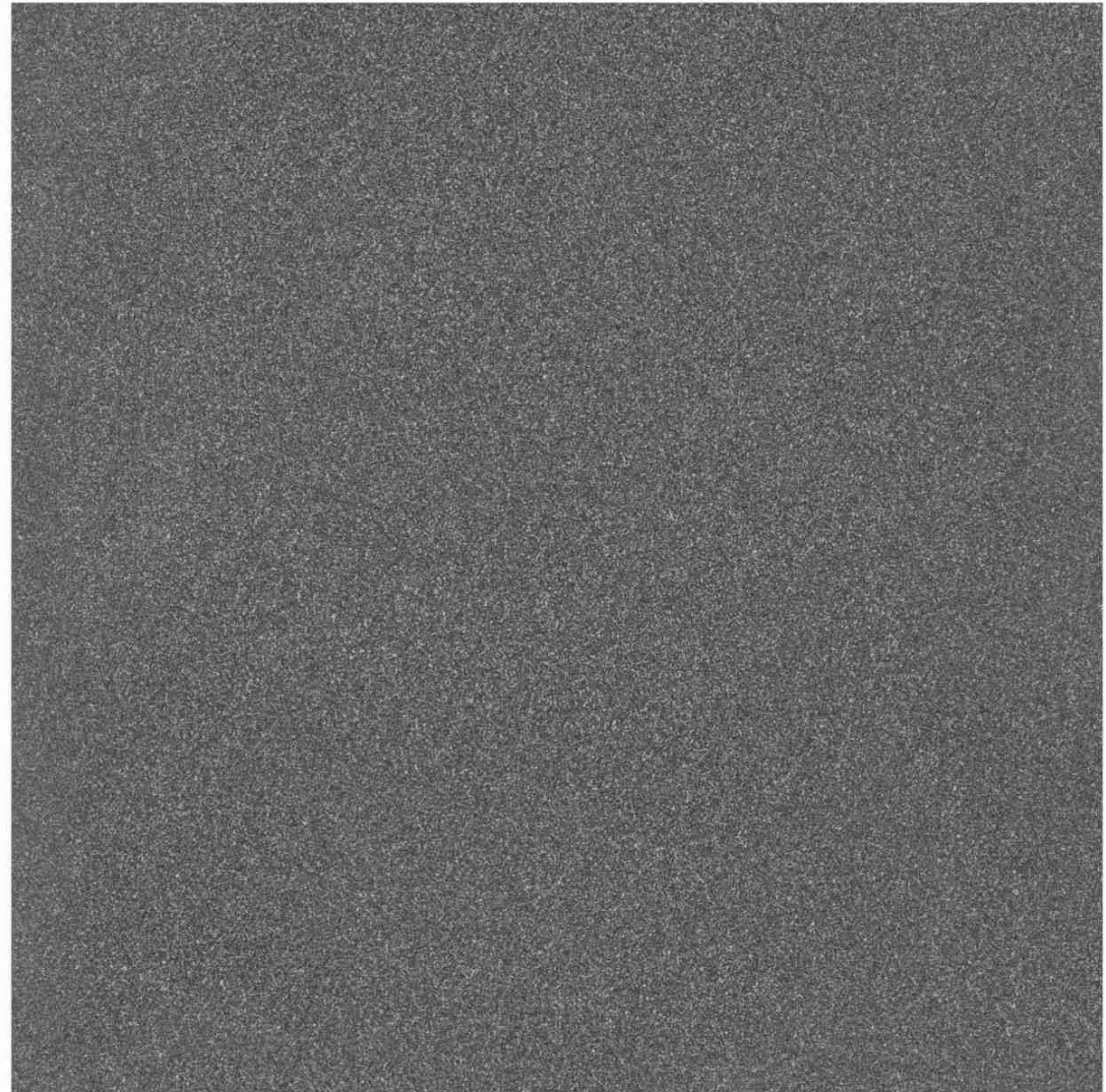
OFFICE & SHOPS

SAND STONE

FULL BODY TILES

600x600mm

FINISH.
GLOSSY/MATT



PETRA ETHAN





RESIDENTIAL



HOTELS



RESTAURANT



PUBLIC SPACES



GARDEN & POOL



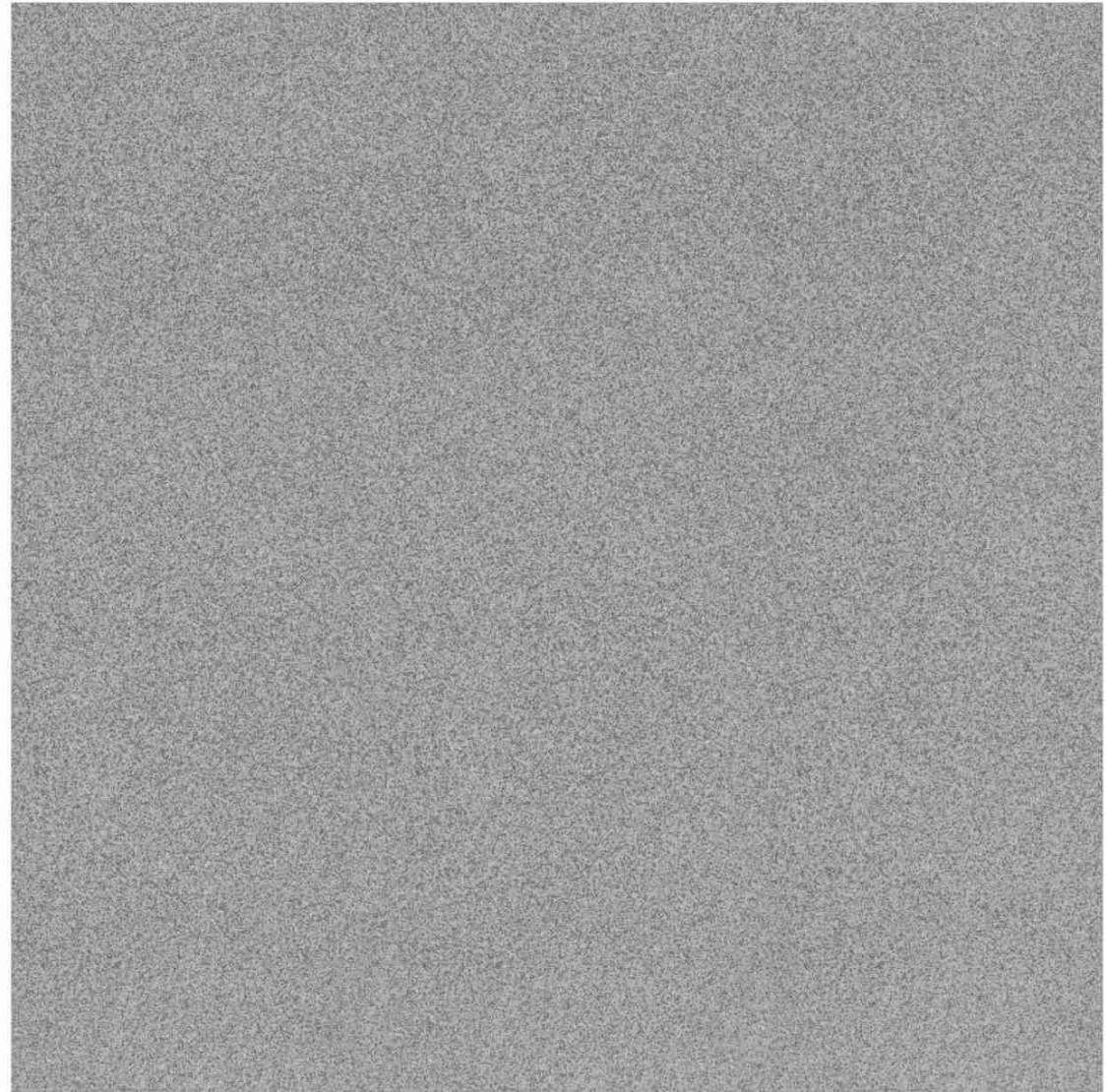
OFFICE & SHOPS

SAND STONE

FULL BODY TILES

600x600mm

FINISH.
GLOSSY/MATT



IWA GRISEO

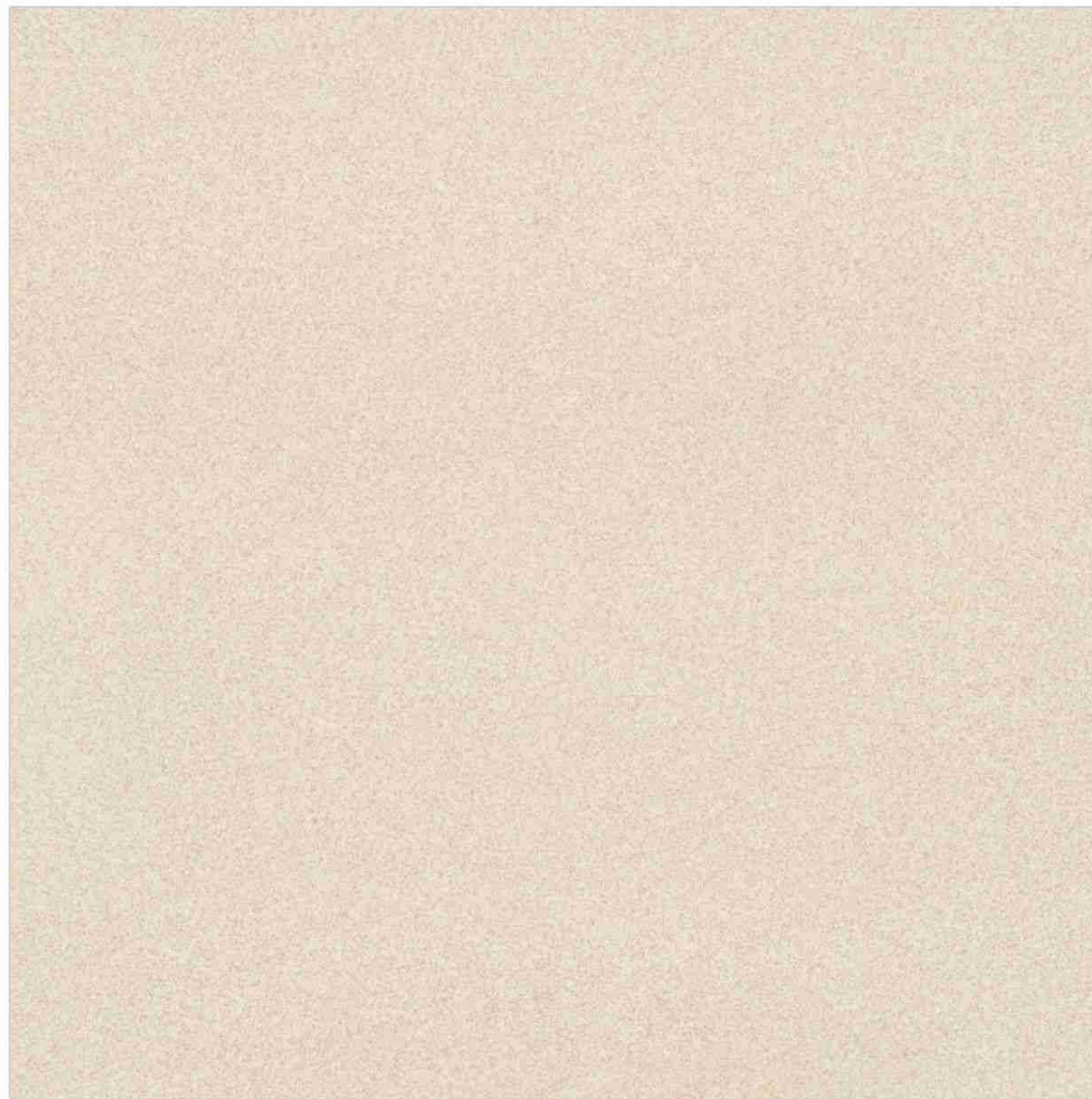


SAND STONE

FULL BODY TILES

600x600mm

FINISH.
GLOSSY/MATT



IWA DESERT



TECHNICAL SPECIFICATION

Sr. No.	CHARACTERISTICS	STANDARD AS PER ISO-13006 / EN14411 GROUP BIA	OUR VALUE	TEST METHOD
REGULATORY PROPERTIES				
01	Deviation in length & width	± 0.50%	± 0.20%	ISO-10545-2
02	Deviation in thickness	± 5.00%	± 4.00%	ISO-10545-2
03	Straightness of sides	± 0.50%	± 0.10%	ISO-10545-2
04	Rectangularity	± 0.50%	± 0.20%	ISO-10545-2
05	Surface flatness	± 0.50%	± 0.20%	ISO-10545-2
06	Colour difference	Unaltered	No Change	ISO-10545-16

STRUCTURAL PROPERTIES				
01	Water Absorption	< 0.50%	< 0.50 %	ISO-10545-3
02	Apparent density	> 2.00 g/cc	> 2.28 g/cc	DIN 51082

MASSIVE MECHANICAL PROPERTIES				
01	Modulus of rupture	Min. 35 N/mm ²	Min. 45 N/mm ²	ISO-10545-4
02	Breaking strength	Min. 1300 N	Min. 2000 N	ISO-10545-4
03	Impact resistance	As per mfg.	Min. 0.55	ISO-10545-5

SURFACE MECHANICAL PROPERTIES				
01	Deep abrasion resistance	Max. 175mm ³	Max. 132mm ³	ISO-10545-6
02	Moh's hardness	Min. 6	7	EN 101
03	Surface Abrasion Resistance	As per mfg.	N. A.	ISO-10545-7

THERMOHYDROMETRIC PROPERTIES				
01	Frost resistance	No Damage	Frost proof	ISO-10545-12
02	Thermal shock resistance	No Damage	No Damage	ISO-10545-9
03	Moisture expansion	Nil	Nil	ISO-10545-10
04	Thermal Expansion(COE)	Max. 9.0x10 ⁻⁶	Max. 6.5x10 ⁻⁶	ISO-10545-8
04	Crazing Resistance	As Per Mfg.	N.A.	ISO-10545-11

CHEMICAL PROPERTIES				
01	Chemical resistance	No Damage	No Damage	ISO-10545-13
02	Satin resistance	Resistance	Resistance	ISO-10545-14

SAFETY PROPERTIES				
01	Slip resistance (friction co efficient)	> 0.40	> 0.40	ISO-10545-17

SAND STONE
FULL BODY TILES

BY



PACKING DETAILS

SIZE	PCS./BOX	AREA / BOX
600x600mm	4 Pcs.	1.44 Sq. Mtr. / 15.5 ft

Note : Certain amount of size and shade variation is inherent in all ceramic products. Our conformity to the above fast is applicable only for quality. Colour shown are as accurate as the limitations of the printing process will allow. Prospective customers are advised to inspect a sample of the tile before ordering. Every effort has been made to ensure the accuracy of the information given. However the company reserve the right to change the specification without prior notice. Sometimes variations in shade or size being inherent to ceramic industry may occur. It is suggest to check the tiles before purchase any laying as the company does not accept responsibility once the tiles are laid.

